

NEXT PLUS LS7010



**Operating
Instructions**



Contents

| Contents | Page |
|----------------------------------|------|
| 1 Batteries | 3 |
| 2 Open with Code | 4 |
| 3 Set User Code | 4 |
| 4 Register Fingerprints | 5 |
| 5 Open with Fingerprint | 5 |
| 6 Delete Fingerprints | 6 |
| 7 Locking | 6 |
| 8 Multi mode | 7 |
| 9 Dual mode (Fingerprint + Code) | 8 |
| 10 Dual mode (Code + Code) | 9 |
| 11 Code and Sound Hide | 10 |

FOR SAFETY

Prior to using the safe, please read the instructions carefully.

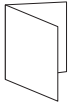
Cautions when placing the safe.

- The safe is heavy and should be handled very carefully.
- Never move the safe with the door open.
- Place the safe on flat floor.

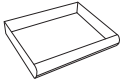
Cautions when using the safe.

- Be careful not to slam the door closed.
- Be careful not to trap hands or fingers when closing door.
- As the safe is heavy and operated with a smart digital lock, it is not recommend that children operate the safe.
- Be careful not to forget the user code, and keep the instruction outside of the safe.

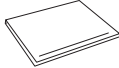
Components



Instructions



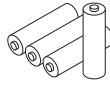
Drawer



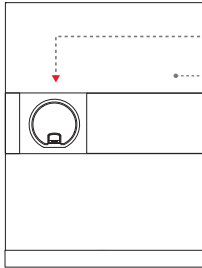
Shelf



Shelf Clips
(4pcs)

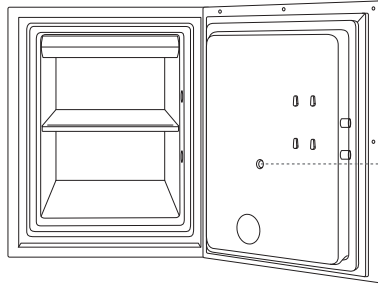


1.5V Alkaline
AA Batteries
(4pcs)



Digital Lock

Door Panel




(M) Memory Button

1. Batteries

Prior to using safe

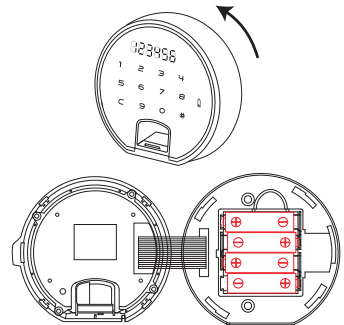
- 1) Hold the digital lock and turn it anti-clockwise to open.
- 2) Load 4pcs of AA Alkaline batteries.
(LED flickers, Bi Bi Bi sound, Melody rings 1 second)

The batteries must be replaced if

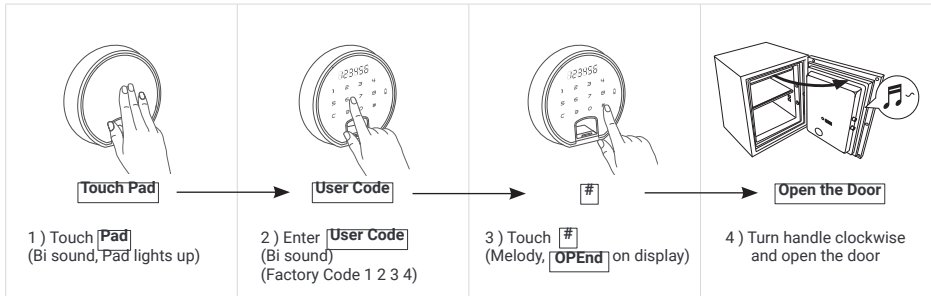
- 1) When touching the pad, **LoBAtt** appears on the display.
- 2) The battery icon  alights on the pad.

* Battery life span : 1 year (Average openings 3 times a day)

* Even when the batteries are completely exhausted, the registered codes and fingerprints are not erased.



2. Open with Code



NOTE: If a wrong code is entered, bi-ric will sound and **ErrOr** will show on the display.

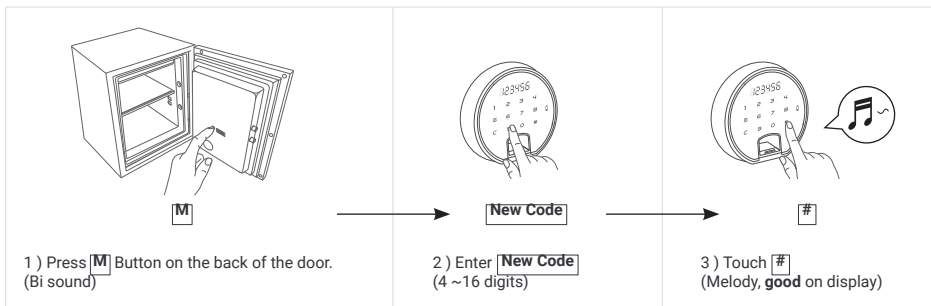
Paralysis: If a wrong code is entered 5 times, the lock will be paralyzed for 5 minutes.

- 1) No response from the touch pad.
- 2) Remaining paralysis time will be shown on the display as min-sec e.g. 4 minutes and 29 seconds will display as "4_29".
- 3) After 5 minutes, the paralysis will end.

Scramble Numbers: The code can be disguised by inserting random numbers either before, after or both before and after the user code. E.g. user code of 1234, xxx1234#, 1234xxx# or xxx1234xxx#. Total of 32 numbers can be accepted.

3. Set User Code

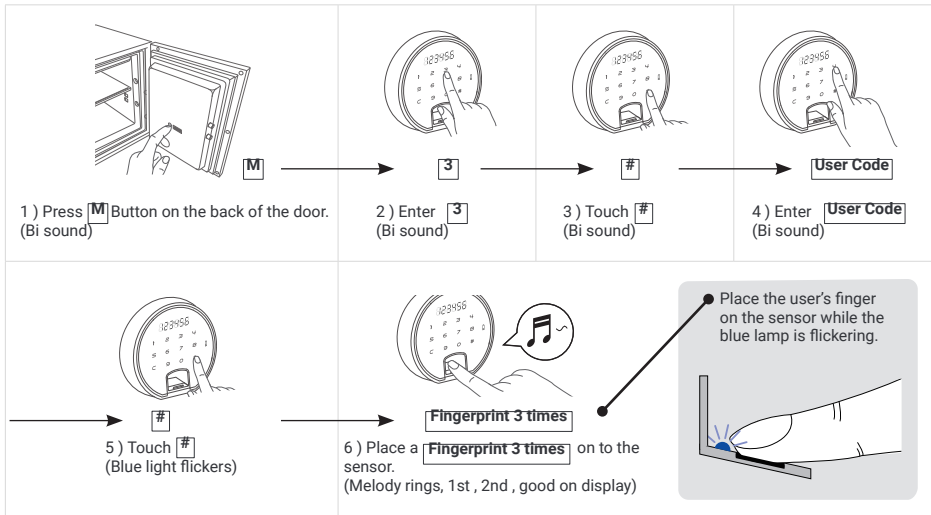
It is advisable to set a new code with the door open and test the new code before closing the door.



- NOTE:**
- 1) Prior to closing the door, please check the new code has been registered correctly by following **2. Open with Code**.
 - 2) It is not recommended to use codes such as a telephone number, birthday or consecutive numbers for security reasons.

4. Register Fingerprints

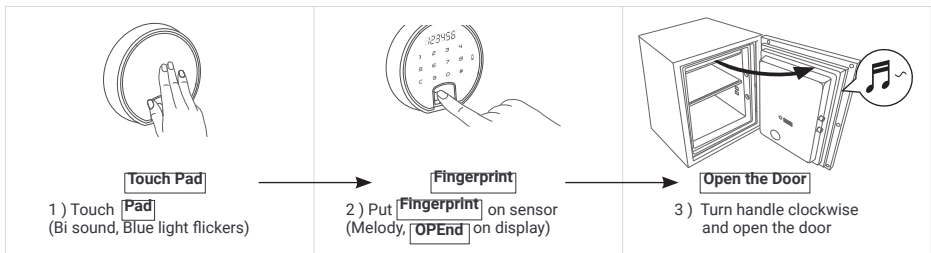
Keep the door open.



- NOTE:**
- 1) Prior to closing the door, please confirm with **5. Open with Fingerprint** if the finger-print has been registered correctly.
 - 2) Worn-out/impaired fingerprints may not be accepted, as they are difficult to read.

* 32 fingerprints can be entered.

5. Open with Fingerprint



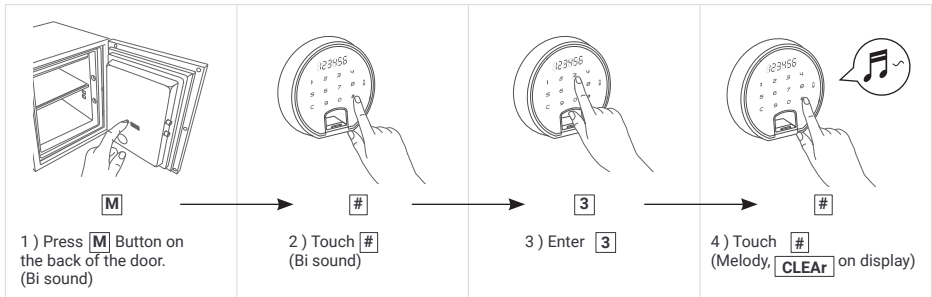
NOTE: If an unregistered fingerprint is entered, bi-bi-bi will sound and **ErrOr** will show on the display.

Paralysis: If unregistered fingerprints are entered 5 times, the lock will be paralyzed for 5 minutes.

- 1) No response from the touch pad.
- 2) Remaining paralysis time will be shown on the display as min-sec e.g. 4 minutes and 29 seconds, 4_29.
- 3) After 5 minutes, the paralysis will end.

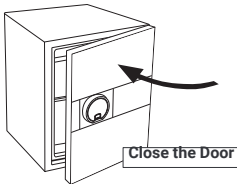
6. Delete Fingerprints

Keep the door open.



All the registered fingerprints are erased simultaneously.

7. Locking



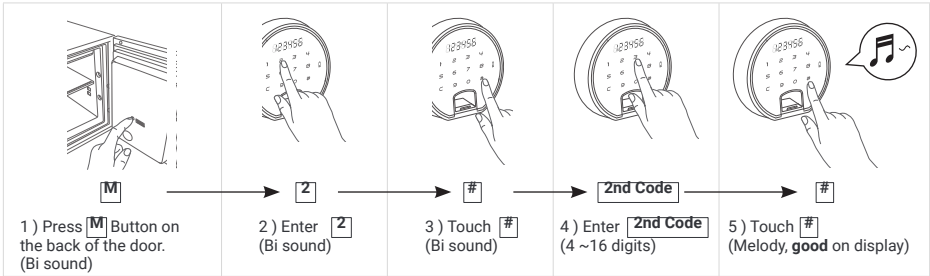
Close the door, and turn handle anti-clockwise.

8. Multi user mode

Two users can independently open the safe with their own user code.

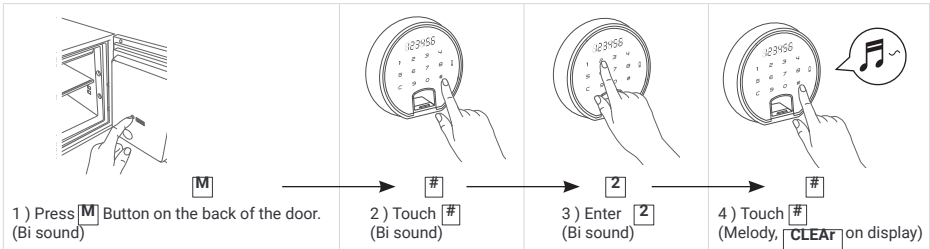
* Multi user mode and dual mode can not be used simultaneously.

SET



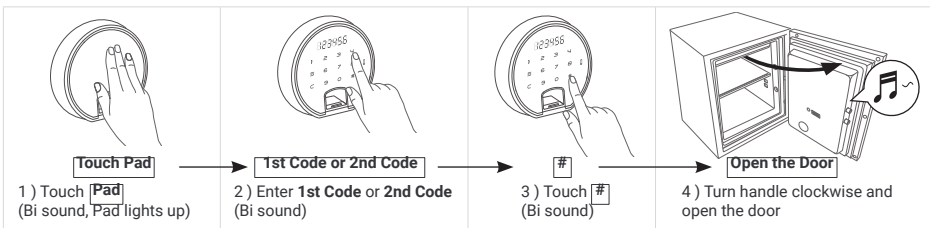
- NOTE:**
- 1) 2nd user code must be different from 1st code.
 - 2) Prior to closing the door, confirm the 2nd code has been registered correctly by following **9. Multi mode > Open**.
 - 3) 2nd code can be changed in the same way as **9. Multi mode > Set**.
 - 4) For setting or changing the 1st code, please follow the instructions in **3. Set User Code**.

UNSET



NOTE: When unsetting multi user mode the 2nd code is removed automatically. The 1st code will be retained.

OPEN

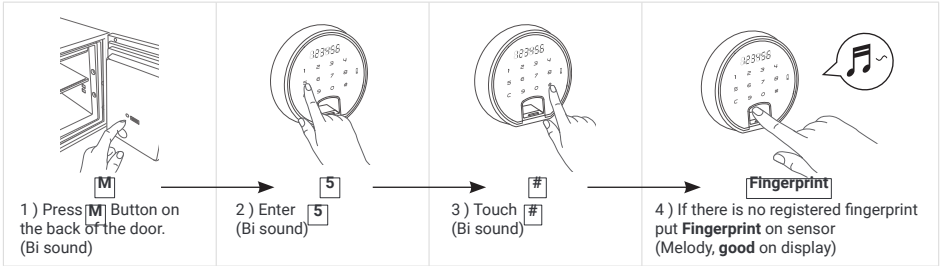


9. Dual mode (Fingerprint + Code)

Code and fingerprint should be entered consecutively to open the safe.

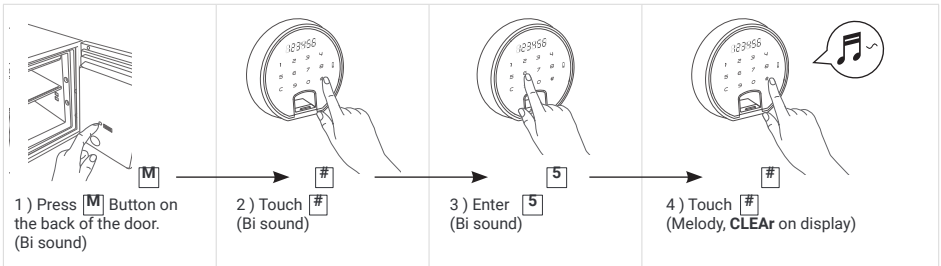
* Dual mode and multi mode can not be used simultaneously.

SET



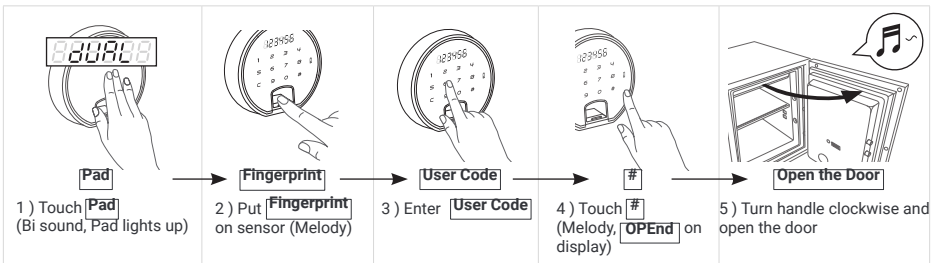
- NOTE:**
- 1) Prior to closing the door, confirm the fingerprint has been registered correctly as shown in **10. Dual mode (Fingerprint+Code) > Open.**
 - 2) Finger-print can be changed in the same way as **10. Dual mode (Fingerprint+Code) > Set.**
 - 3) For setting or changing user code, please follow the instructions in **3. Set User Code.**

UNSET



NOTE: When unsetting dual mode, the registered fingerprint is removed automatically. The user code will be retained.

OPEN

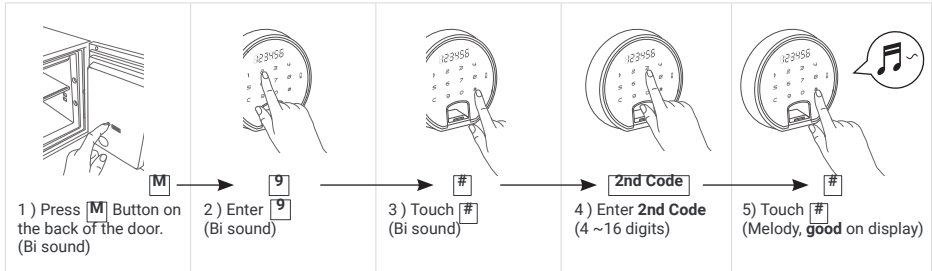


10. Dual mode (Code + Code)

Two different codes should be entered consecutively to open the safe.

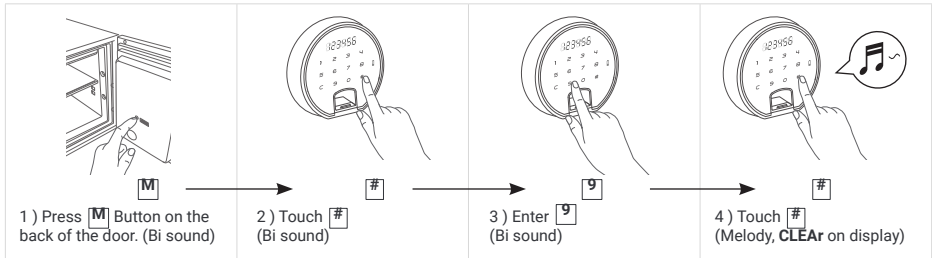
* Dual mode and multi mode can not be used simultaneously.

SET



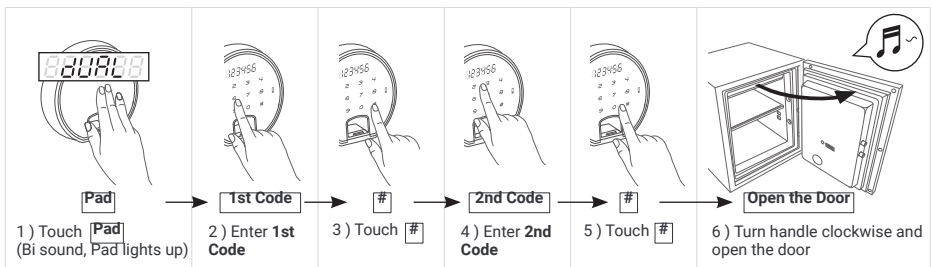
- NOTE:**
- 1) 2nd code must be different from 1st code.
 - 2) Prior to closing the door, confirm the 2nd code has been registered correctly as shown in 11. **Dual mode (Code+Code) > Open.**
 - 3) 2nd code can be changed in the same way as 11. **Dual mode (Code+Code) > Set.**
 - 4) For setting or changing 1st code, please follow the instructions in 3. **Set User Code.**

UNSET



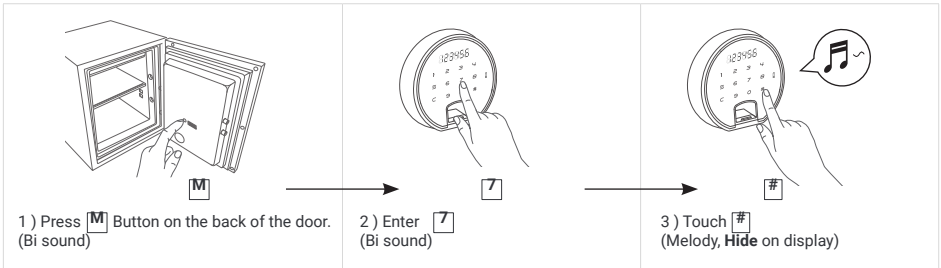
NOTE: When unsetting dual mode, the 2nd code is removed automatically. The 1st code will be retained.

OPEN

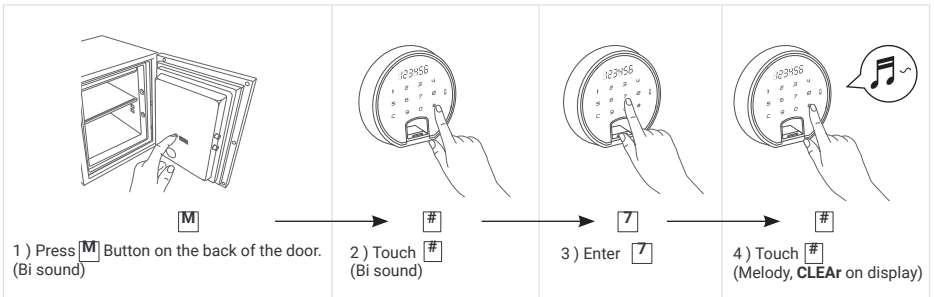


11. Code and Sound Hide

SET



UNSET



Need support?

We're here if you need us.

Web www.phoenixsafe.co.uk
Email info@phoenixsafe.co.uk
Phone 0151 944 6444

**Where peace of mind
is guaranteed.**

